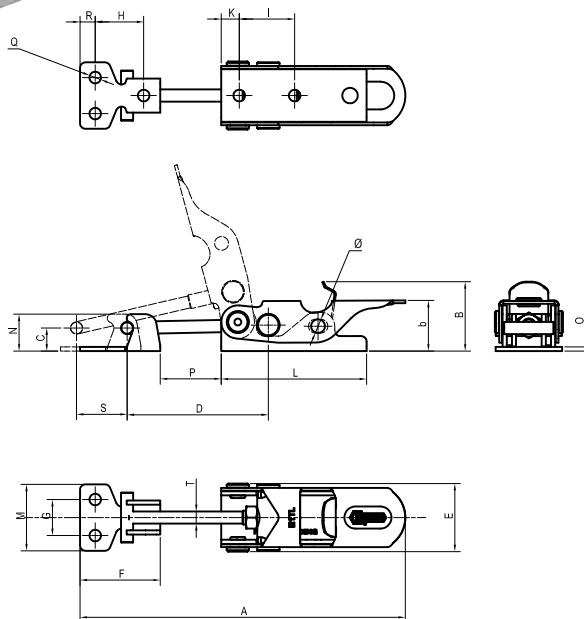


SERIES ETL



ETL-EGL ROD SERIES (LIGHT PERFORMANCE)

The sizes of this series are also produced in stainless steel and are shown below in red.

The main feature of this series is the special safety lever with the purpose of preventing any accidental openings caused by vibrations.

Material:

Galvanized steel or **AISI 304 stainless Steel**

Swivel Pivot:

Galvanized steel or **AISI 303 stainless Steel**

Riveted Pivots and rod:

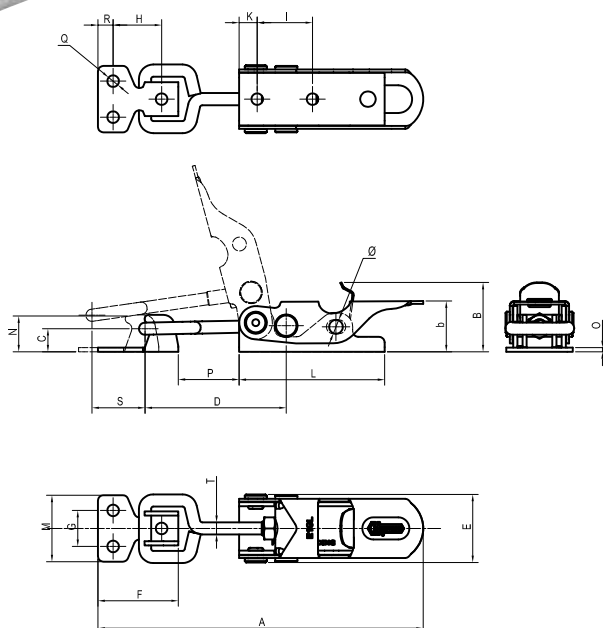
Galvanized steel or **AISI 304 stainless Steel**

Performance:

Form ETL is supplied with a T-shaped rod and a hooking bracket.

Form EGL is supplied with a eye-bolt rod and a hooking bracket

SERIES EGL



Code	Description	Stainless steel Code	Description	A	b	B	C	D	E	F	G	H	I	K	L	M	N	O	P	Q	R	S	T	Diam.	Fh (daN)	gr.
AE1120	E1TL	ES1120	E1TLX	117,5	18	25	8,3	51÷58	25	29	13	17,5	20	6,5	52,5	24	13,3	1,5	22÷29	4,2	5,5	11	M5	5	100	62
AE2120	E2TL	ES2120	E2TLX	155,5	25	33	10	64÷75	31	42	15	24	24,5	8	65	32	16,4	2	28÷39	5,2	10	13	M6	6	200	136
AE3120	E3TL	ES3120	E3TLX	189,5	32	41,5	12,7	79,5÷92	36	52	20	29,5	30	11	81,5	38	20,7	2,5	33÷45,5	6,5	12,5	16	M8	8	300	258

Code	Description	Stainless steel Code	Description	A	b	B	C	D	E	F	G	H	I	K	L	M	N	O	P	Q	R	S	T	Diam.	Fh (daN)	gr.
AE1110	E1GL	ES1110	E1GLX	117,5	18	25	8,3	51-58	25	29	13	17,5	20	6,5	52,5	24	13,3	1,5	22-29	4,2	5,5	12	M5	5	100	65
AE2110	E2GL	ES2110	E2GLX	155,5	25	33	10	64-75	31	42	15	24	24,5	8	65	32	16,4	2	28-39	5,2	10	14	M6	6	200	143
AE3110	E3GL	ES3110	E3GLX	189,5	32	41,5	12,7	79,5-92	36	52	20	29,5	30	11	81,5	38	20,7	2,5	33-45,5	6,5	12,5	18	M8	8	300	273