

LATCH E SERIES



ET-EG ROD SERIES (LIGHT PERFORMANCE)

Material:

Galvanized steel or **AISI 304 stainless Steel**

Swivel Pivot:

Galvanized steel or **AISI 303 stainless Steel**

Riveted Pivots and rod:

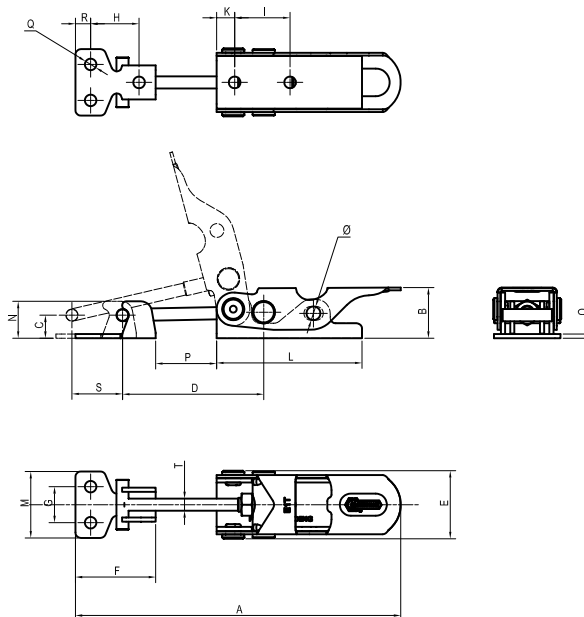
Galvanized steel or **AISI 304 stainless Steel**

Performance:

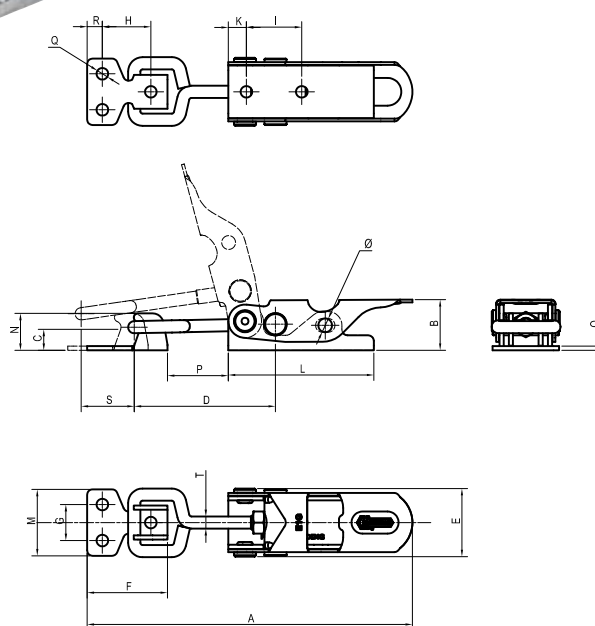
Form ET is supplied with a T-shaped rod and a hooking bracket.

Form EG is supplied with an eye-bolt rod and a hooking bracket.

SERIES ET



SERIES EG



Code	Description	Stainless steel Code	Description	A	B	C	D	E	F	G	H	I	K	L	M	N	O	P	Q	R	S	T	Diam.	Fh (daN)	gr.
AE1020	E1T	ES1020	E1TX	117,5	18	8,3	51÷58	25	29	13	17,5	20	6,5	52,5	24	13,3	1,5	22÷29	4,2	5,5	11	M5	5	100	61
AE2020	E2T	ES2020	E2TX	155,5	25	10	64÷75	31	42	15	24	24,5	8	65	32	16,4	2	28÷39	5,2	10	13	M6	6	200	135
AE3020	E3T	ES3020	E3TX	189,5	32	12,7	79,5÷92	36	52	20	29,5	30	11	81,5	38	20,7	2,5	33÷45,5	6,5	12,5	16	M8	8	300	256

Code	Description	Stainless steel Code	Description	A	B	C	D	E	F	G	H	I	K	L	M	N	O	P	Q	R	S	T	Diam.	Fh (daN)	gr.
AE1010	E1G	ES1010	E1GX	117,5	18	8,3	51÷58	25	29	13	17,5	20	6,5	52,5	24	13,3	1,5	22÷29	4,2	5,5	12	M5	5	100	63
AE2010	E2G	ES2010	E2GX	155,5	25	10	64÷75	31	42	15	24	24,5	8	65	32	16,4	2	28÷39	5,2	10	14	M6	6	200	142
AE3010	E3G	ES3010	E3GX	189,5	32	12,7	79,5÷92	36	52	20	29,5	30	11	81,5	38	20,7	2,5	33÷45,5	6,5	12,5	18	M8	8	300	270