

## T5 ROD SERIES WITH SAFETY LEVER (LIGHT PERFORMANCE)

The sizes of this series are also produced in stainless steel and are shown below in red.

### Material:

Parts made of phosphated sheet metal and riveted pivots made of galvanized steel or **AISI 304 stainless steel**. Turned parts made of galvanized steel or **AISI 303 stainless steel**.

### Handles:

Red polyurethane resistant to oils, grease and other chemical agents.

### Rod:

Phosphated steel or **AISI 304 stainless steel** to be ordered separately.

### Features and applications:

The tool can be opened with only one hand, disengage the working surface (the clamping lever opens by itself) and close it again for the next operation; you can choose from three different optional tie rods (to be ordered separately): Eye bolt rod "TG", T-shaped rod "TT", Hook Rod "TU".

The construction features and materials chosen make these tools highly resistant.

The support base is perpendicular to the force line of action.

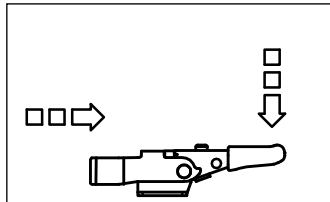
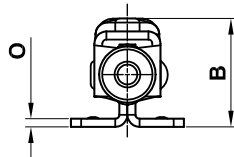
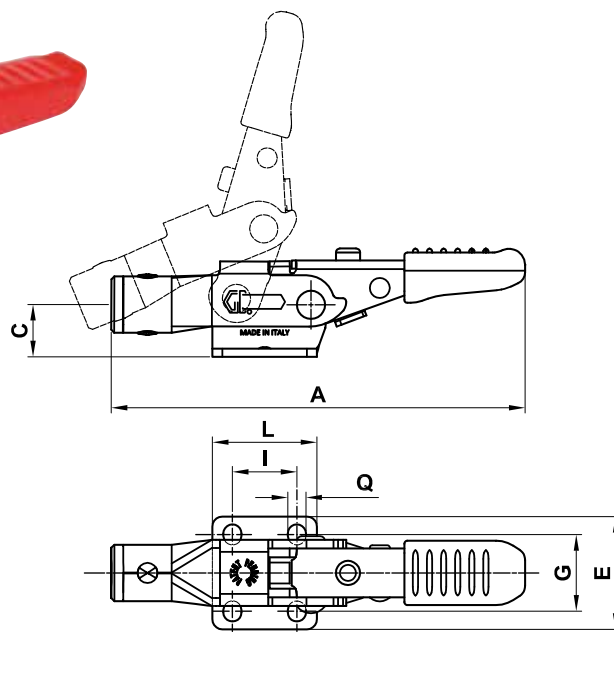
In the closed position, the control lever is parallel to the support base.

A special grease is placed between two contacting surfaces during assembly.

## FORM T5



**PATENTED**



Code	Description	Stainless steel Code	Description	A	B	C	E	G	I	L	O	Q	Fh (daN)	gr.
AL575	160/T5	AS545	160/T5X	103	26,8	13	28	19	16	26	2	4,5	175	100
AL580	320/T5	AS550	320/T5X	153	38,5	19	44	32	19	40	3	6,7	400	295
AL585	700/T5	AS555	700/T5X	222	53	28	54	38,1	41,5	60	3,5	8,5	750	690

