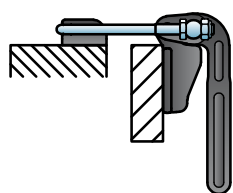
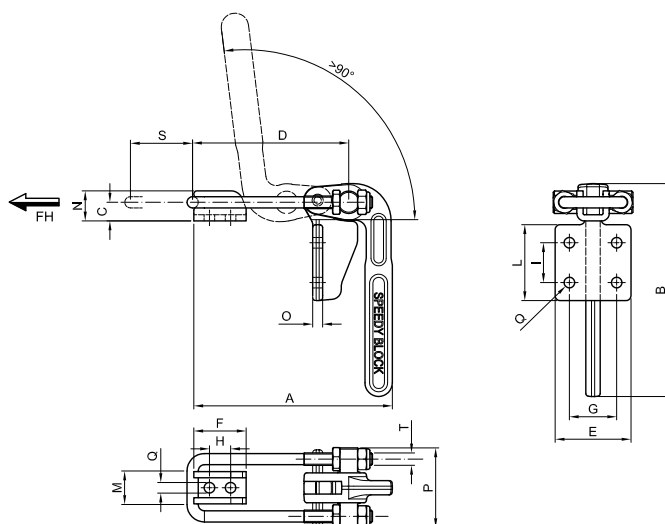
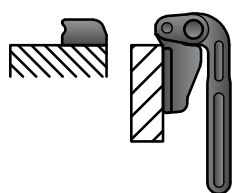


FORM T3



T3



T30

DOUBLE AND WELDABLE DOUBLE ROD SERIES (HEAVY PERFORMANCE)

Material:

Hot-stamped, weldable, black varnished steel.

Pivot: Hardened, ground and knurled steel to prevent rotation.

Bar, swinging pivot and nuts:

Galvanized steel.

Performance:

Form T3 Hot-stamped, black varnished steel.

Form T3S Hot-stamped and phosphated steel

The tool comes with a double bar with hooking bracket and nuts.

In addition to the standard length of the U rods, a variety of other lengths are given on page 57.

Therefore, when ordering, indicate:

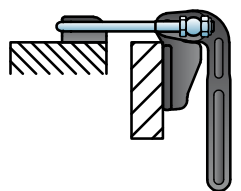
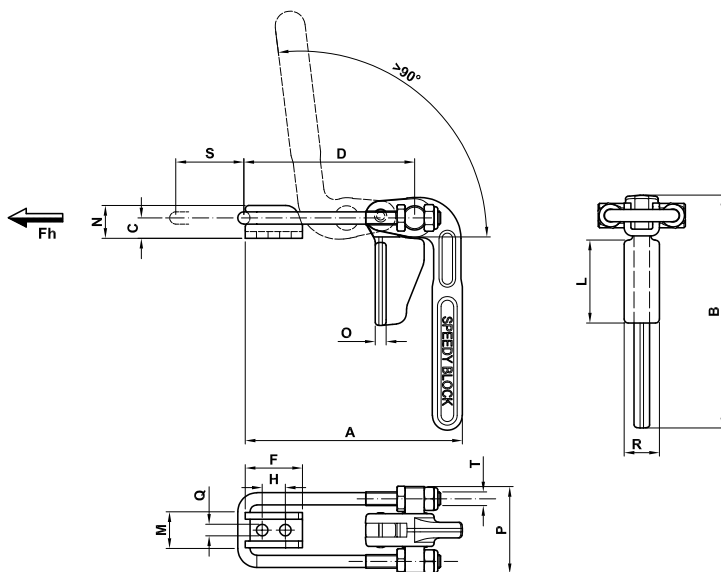
T3-T3S = Tool with Standard Double Threaded Rod and hooking bracket

T30-T3S0 = Tool without double Threaded rod, **which is to be ordered separately** (see page 57)

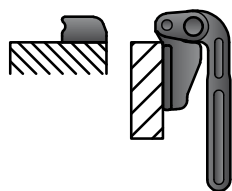
Features and applications:

The tools of this series ensure a perfect closing of lids. The construction features and materials chosen make these tools highly resistant. The support base is perpendicular to the force line of action. In the closed position, the control lever is parallel to the support base.

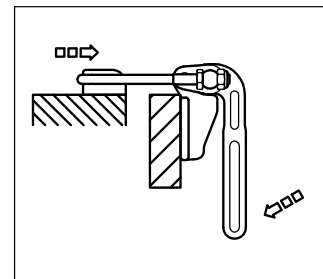
FORM T3S



T3S



T3S0



Code	Description	A	B	C	D	E	F	G	H	I	L	M	N	O	P	Q	S	T	Fh (daN)	gr.
AL550	1400/T3	159,5	171	15	104,5÷125,5	61	42	38	17	32	61	26	24	8	64	8,5	50	M10	1200	1235

Code	Description	A	B	C	D	F	H	L	M	N	O	P	Q	R	S	T	Fh (daN)	gr.
AL552	1400/T3S	159,5	171	15	104,5÷125,5	42	17	61	26	24	8	64	8,5	26	50	M10	1200	1115