

## DOUBLE ROD WITH SAFETY LEVER SERIES (LIGHT PERFORMANCE)

The sizes of this series are also produced in **Stainless Steel 316** and are shown below in red.

### Material:

Galvanized steel or **AISI 316 stainless steel**

### Rivets and rods:

Galvanized steel or **AISI 316 stainless steel**

### Swinging pivot:

Galvanized steel or **AISI 316 stainless steel**

### Handles:

Red polyurethane resistant to oils, grease and other chemical agents.

### Performance:

The tool comes with a double bar with hooking bracket and nuts.

In addition to the standard length of the U rods, a variety of other lengths are given on page 57.

**T6 or T16** = Tool with Standard Double Threaded Rod and hooking bracket

**T60 or T160X** = Tool without double Threaded rod, which is to be ordered separately (see page 57)

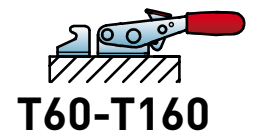
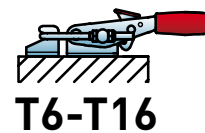
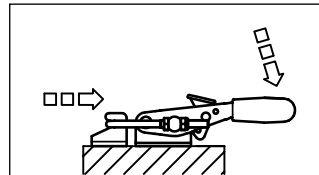
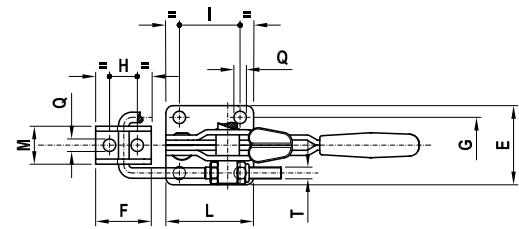
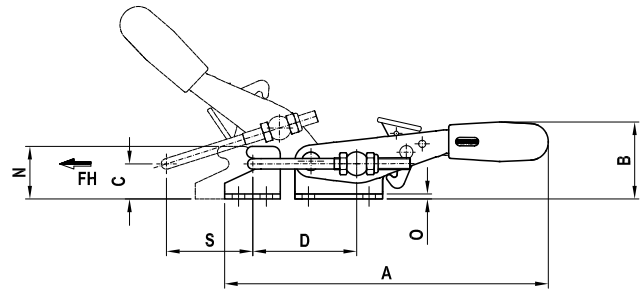
### Features and applications:

The main feature of this series is the special safety lever with the purpose of preventing any accidental openings caused by vibrations. The tools of this series ensure a perfect closing of lids. The support base is perpendicular to the force line of action. In the closed position, the control lever is parallel to the support base. A special grease is placed between two contacting surfaces during assembly.

## FORM T6



**PATENTED**



| Code  | Description | Stainless steel Code | Description | A   | B  | C  | D     | E  | F  | G  | H    | I    | L  | M  | N  | O   | Q   | S     | T  | Fh (daN) | gr. | gr. inox |
|-------|-------------|----------------------|-------------|-----|----|----|-------|----|----|----|------|------|----|----|----|-----|-----|-------|----|----------|-----|----------|
| AL780 | 160/T6      | AS600                | 160/T16     | 101 | 31 | 12 | 35÷44 | 28 | 20 | 19 | 10   | 16   | 26 | 14 | 18 | 2   | 4,3 | 18÷24 | M4 | 160      | 92  | 95       |
| AL785 | 320/T6      | AS605                | 320/T16     | 169 | 45 | 16 | 54÷63 | 44 | 28 | 32 | 14,3 | 19   | 40 | 22 | 25 | 3   | 6,5 | 26÷34 | M6 | 320      | 307 | 331      |
| AL790 | 700/T6      | AS610                | 700/T16     | 221 | 56 | 24 | 70÷90 | 54 | 38 | 38 | 19   | 41,5 | 60 | 26 | 36 | 3,5 | 8,5 | 40÷50 | M8 | 750      | 627 | 644      |

