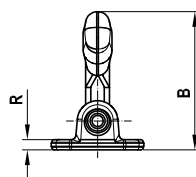
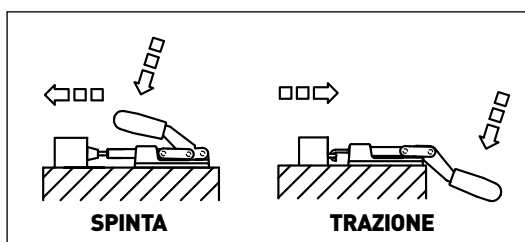
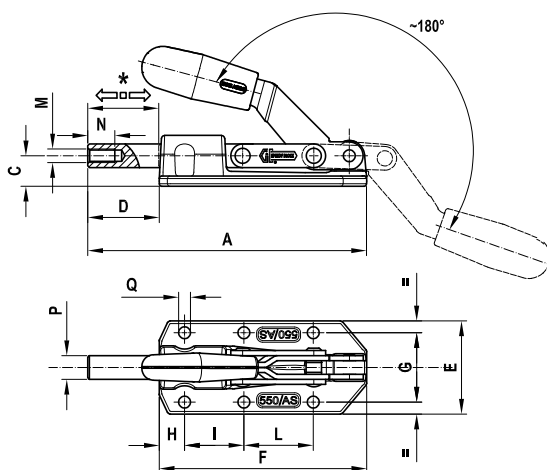


FORM AS



PUSH AND PULL STRAIGHT-LINE ACTION SERIES

Material: Galvanized steel
Riveted pivots, push bar and control lever: Galvanized steel
Basic clamp body: STM A105 hot forged steel and 304 stainless steel for mod. 70-160-360 / ASX
Finish: Manganese phosphating for mod. 70-160-1100 / AS. Painting for mod. 360-550-2100-3100 / AS. Polishing for mod. 70-160-360 / ASX
Handles: Red polyurethane; resistant to oils, grease and other chemical agents.
Spindles: To be ordered separately (see Accessories on page 87).
Features and applications:
 The tools of this series can either be pushed or pulled.
 A special grease is placed between two contacting surfaces during assembly.
 This pneumatic actuated series is found on page 84-85.

Code	Description	Stainless steel Code	Description	A	B	C	D	E	F	G	H	I	L	M	N	P	Q	R	*	Fh (daN)	gr.
AG070	70/AS	AS395	70/ASX	86	41	12	22	36	64	26	13	26		M6	12	8,5	4,3	6	20	120	165
AG160	160/AS	AS397	160/ASX	116	56	15	31	46	85	33,5	11,5	36,5		M6	12	11	5,5	7	30	280	360
AG351	360/AS	AS399	360/ASX	122	70	25	32	45,5	90	33,5	30	36,5		M8	15	12	5,5	7	32	560	485
AG355	550/AS			164,5	75	18	42	55	122,5	41	15	35	41	M8	16	14	7	7	42	800	750
AG361	1100/AS			182	92	25	49	57	133	41	15	35	41	M10	18	16	8,5	8	50	1600	1060
AG371	2100/AS			238	118,5	35	61	70	177	50	35	50	50	M12	22	20	8,5	10	60	2500	2280
AG381	3100/AS			316	137	40	100	76	216	54	40	70	70	M14	25	22	11	10	100	4500	3350

