

## HORIZONTAL SERIES WITH ANTI-RELEASE LEVER AND EXTENDED CLAMPING LEVER

### Material:

Galvanized steel

### Riveted pivots:

Galvanized steel

### Supporting bushes:

Hardened and ground steel.

### Handles:

Red polyurethane resistant to oils, grease and other chemical agents.

### Performance:

Form OLS with extended clamping lever and folded base.

Form PLS with extended clamping lever and straight base.

### Spindles:

To be ordered separately (see Accessories on page 87).

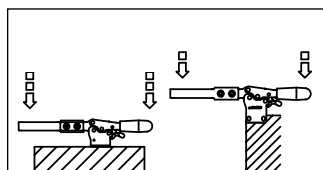
### Extensions:

The models are supplied with AP6 and AP8 extension as per the drawing and with two flanged washers (see Accessories on page 90).

### Features and applications:

The main features of this series are the special anti-release lever and the special extension of the locking arm to facilitate the specific use in control templates; these tools are designed to prevent the operator's fingers from being crushed by the levers when opening. During the closing, the clamping lever is guided laterally to ensure greater stability against possible transverse stresses.

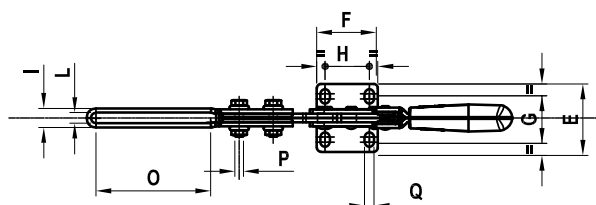
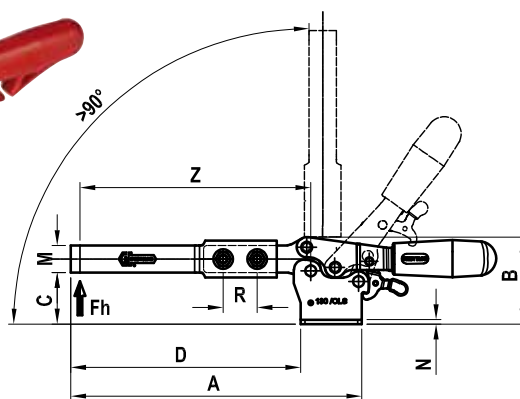
A special grease is placed between two contacting surfaces during assembly.



## FORM OLS



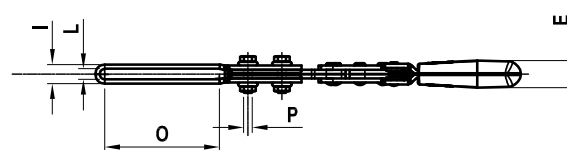
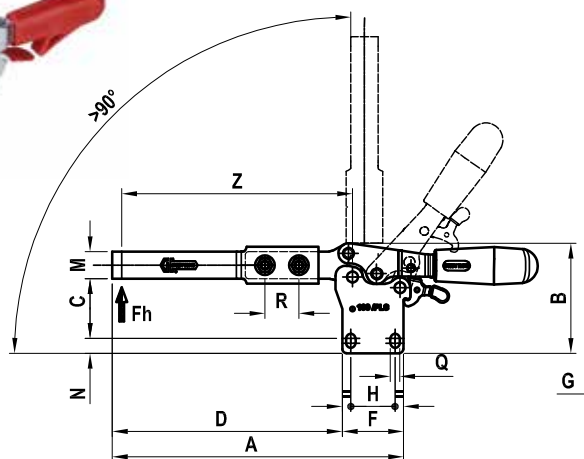
PATENTED



## FORM PLS



PATENTED



Code	Description	A	B	C	D	E	F	G	H	I	L	M	N	O	P	Q	R	Z	Fh (daN)	gr.
AD146	130/OLS	171	51	30,5	135	40	36	22,4÷28,4	26	11,5	6,3	16	2,5	67,5	M6	5,6	20	134	60	295
AD151	130/PLS	171	64,5	35÷38	135	16	36	10	26	11,5	6,3	16	5,8÷8,8	67,5	M6	5,6	20	134	60	295
AD295	230/OLS	196	61,5	36,5	152	44	44	26÷31,5	26	14,2	8,2	18	3	71,5	M8	6,6	26	150	110	485
AD297	230/PLS	196	75,5	42÷44,5	152	16	44	12	26	14,2	8,2	18	6,5	71,5	M8	6,6	26	150	110	485