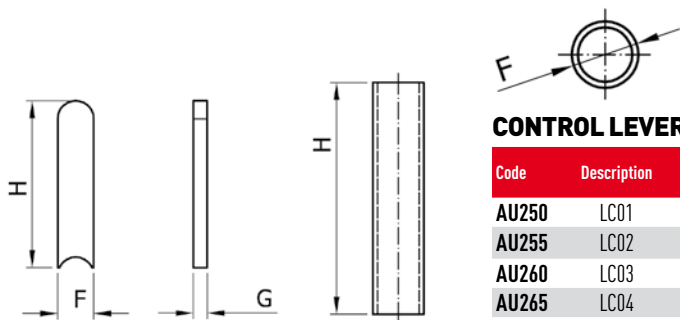


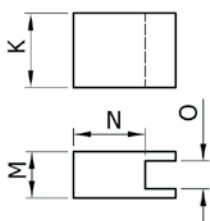
## HANDLE

Code	Description	A	B	C	F	gr.
AU151	10151	13	5	55		12
AU154	10154	20	8	77		34
AU156	10156			112	22	50
AU157	10157			112	25	50



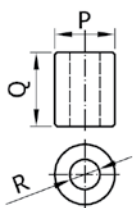
## CONTROL LEVER

Code	Description	F	G	H	gr.
AU250	LC01	13	5	63	31
AU255	LC02	20	8	90	108
AU260	LC03	22		122	122
AU265	LC04	25		138	175



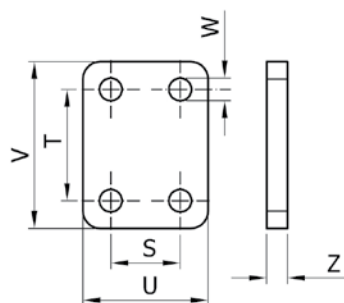
## CLAMPING LEVER

Code	Description	K	M	N	O	gr.
AU230	LS01	16	10	15,5	6	23
AU235	LS02	24	15	24	10	75,5
AU240	LS03	30	20	22,1	12	130
AU245	LS04	35	25	23,5	16,2	160



## SLEEVE

Code	Description	P	Q	R	gr.
AU280	LM01	13	16	6,5	13
AU285	LM02	20	24	10,5	42
AU290	LM03	24	30	12,5	76
AU295	LM04	32	35	16,5	120



## BASE

Code	Description	S	T	U	V	W	Z	gr.
AU300	PB01	20	32	36	48	6,5	6	74
AU305	PB02	30	45	54	65	8,5	8	205
AU310	PB03	55	55	75	75	10,5	10	400
AU315	PB04	65	65	90	100	12,5	10	570

