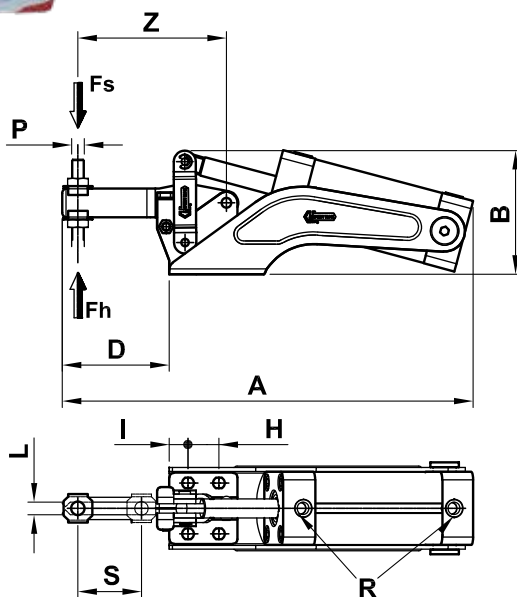
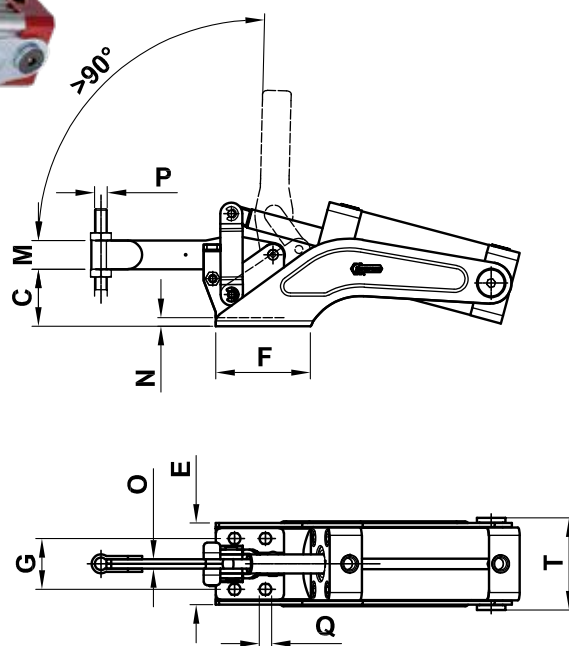


## FORM AP



## FORM EP



### LIGHT PNEUMATIC SERIES

This series has been completely redesigned, giving the items a greater operating life.

**Material:**

Sheet metal and galvanized steel riveted pivots.

Hardened and ground steel rotation pivots, running into sockets with similar feature.

**Pneumatic cylinder:**

All the cylinders of this series are magnetic, with a pneumatic brake inside the back head.

Maximum operating pressure 6 bar.

Maximum operating temperature 70°C.

The electronic switch for detecting the position is AU570 (see the presentation at page 87) and must be ordered separately.

**Spindle:**

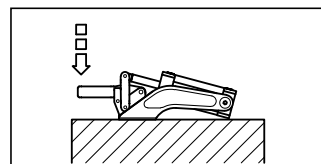
To be ordered separately (see accessories on page 87).

**Feature and applications:**

A filter-reducer-lubricator group is recommended for a long and smooth operation of the cylinder, while for a long duration of the mechanical components we recommend using suitable flow regulations and calibrating the speed of the motion desired.

You can find the instructions for the set-up and daily use of the items of this series on the technical sheets reported on our website.

The values of the clamping force  $F_s$  on the chart are measured at 6 bar pressure air. This pneumatically operated series can be found on p. 10.



Code	Description	A	B	C	D	E	F	G	H	I	L	M	N	O	P	Q	R	S	T	Z	Fh (daN)	Fs (daN)	gr.
A0400	75/AP	162	54	22	38	40	40	24	14,5÷16,5	6,5÷7	5,2	11	3,5		M5	4,5	M5	20	47	56	70	38	400
A0402	75/EP	163	54	22	39	40	40	24	14,5÷16,5	6,5÷7		11	3,5	4	M5	4,5	M5		47		70	38	400
A0408	130/AP	195	66	30	50	47,5	45	27÷29	12,5÷19	8÷11,2	6,2	16	4,5		M6	5,6	1/8"	28	51	71	160	80	650
A0410	130/EP	196	66	30	51	47,5	45	27÷29	12,5÷19	8÷11,2		16	4,5	5	M6	5,6	1/8"		51		160	80	650
A0416	230/AP	259	78	36	67	51	55	32	18,5÷20,5	11,5÷12	8,5	18	5,5		M8	6,7	1/8"	40	58	94	220	120	1150
A0418	230/EP	261	78	36	69	51	55	32	18,5÷20,5	11,5÷12		18	5,5	6	M8	6,7	1/8"		58		220	120	1130
A0428	330/AP	307	96	46	78	74	55	45÷46	29÷32	8,5÷10,5	10,5	22	6,5		M10	8,6	1/4"	45	70	110	250	175	1850
A0430	330/EP	309	96	46	80	74	55	45÷46	29÷32	8,5÷10,5		22	6,5	7	M10	8,6	1/4"		70		250	175	1900
A0440	430/AP	363	114	55	88	73	70	45	32	14	12,5	26	7,5		M12	8,5	1/4"	48	82,5	124	290	225	3300
A0442	430/EP	364	114	55	90	73	70	45	32	14		26	7,5	10	M12	8,5	1/4"		82,5		290	225	3300