

## Toggle clamp Form SP4

### Toggle clamps - Pneumatic series

New

Available in magnetic execution

### Light pneumatic series

This series has been completely redesigned, giving the items a greater operating life.

### Material

Sheet metal and galvanized steel riveted pivots. Hardened and ground steel rotation pivots, running into sockets with similar feature.

### Pneumatic cylinder

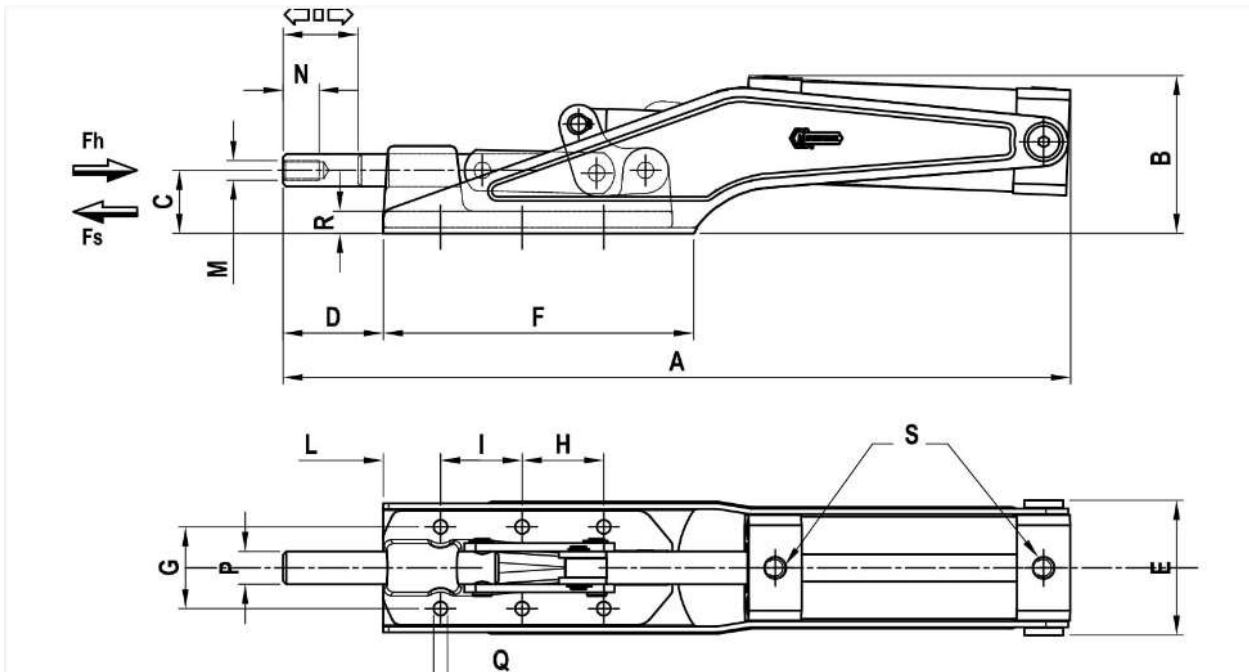
All the cylinders of this series are magnetic, with a pneumatic brake inside the back head. Maximum operating pressure 6 bar. Maximum operating temperature 70°C. The electronic switch for detecting the position is AU570 and must be ordered separately.

### Spindle

To be ordered separately

### Feature and applications

A filter-reducer-lubricator group is recommended for a long and smooth operation of the cylinder, while for a long duration of the mechanical components we recommend using suitable flow regulations and calibrating the speed of the motion desired. The values of the clamping force  $F_s$  on the chart are measured at 6 bar pressure air.



Code	Description	A	B	C	D	E	F	G	H	I	L	M	N	P	Q	R	S	*	Fh (daN)	Fs (daN)	gr.
AO444	70/SP4	163	50	13,5	20	48	70	26		26	13	M6	12	8,5	4,3	7,5	M5	12	120	78	500
AO446	360/SP4	274	69	27,5	32	58	94	33,5		36,5	30	M8	15	12	5,5	9,5	1/8"	23	560	129	1400
AO448	1100/SP4	361	85	28	49	70	138	41	41	35	15	M10	18	16	8,5	11	1/4"	32	1600	448	2600
AO450	2100/SP4	482	96,5	38,5	61,5	82,5	190	50	50	50	35	M12	22	20	8,5	13,5	1/4"	45	2500	552	5200