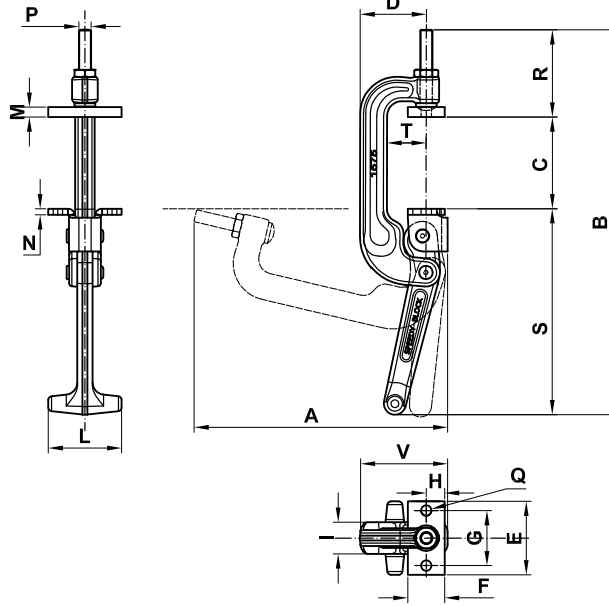


FORM C

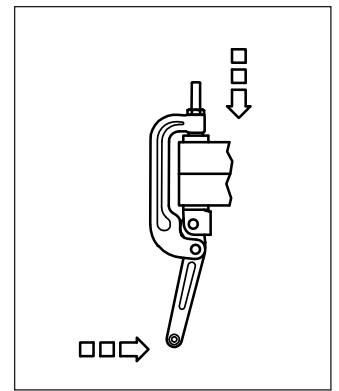


C SERIES FOR HIGH TEMPERATURES

Material: The sheet metal parts are made from steel; The other parts are made of hot-stamped weldable steel.

Performance: The tool comes complete with adjusting screw and bearing plate.

Features and applications: The tools of this series are generally used in rotational forging, as it is able to operate at high temperatures (240-300°C). This is made possible thanks to their finish, the interposition of special copper grease between the parts and appropriate tolerances between the couplings.



Code	Description	A	B	C	D	E	F	G	H	I	L	M	N	P	Q	R	S	T	V	Fh1 (daN)	gr.	
AL758		1540	173	280	40	54	60	30	45	15	26	60	8	5	M10	8.5	71	168	32	72	1500	1110
AL760		1575	207	315	75	54	60	30	45	15	26	60	8	5	M10	8.5	71	168	32	72	1500	1190



Sign up to our newsletter
to keep updated
on our developments!

www.speedyblock.com